



Kingswood Road, Brixton, SW2

2 bedroom flat - conversion for sale

£585,000

Share of Freehold

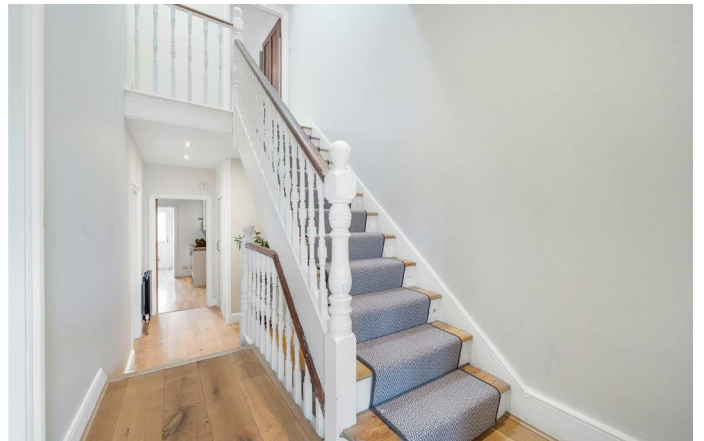
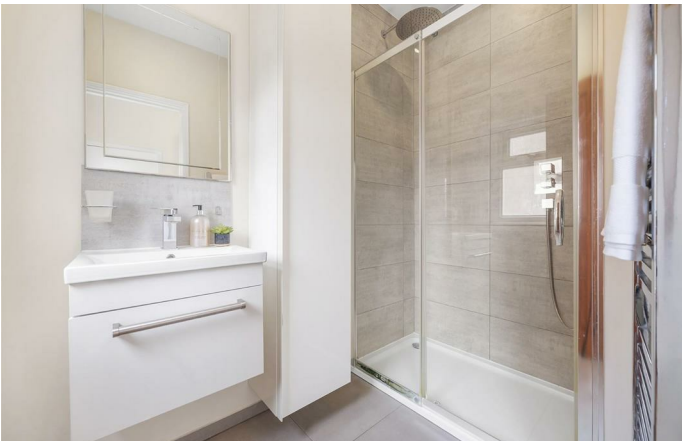
Property Details

An exquisite two double bedroom split-level maisonette with a private balcony, set within a handsome Victorian terraced house on Kingswood Road – a quiet, neighbourly street nestled between Brixton and Clapham. This generous home spans over 1,000 square feet and benefits from a private entrance, having been stylishly renovated throughout in recent years. An expansive reception room occupies the front of the home, flooded with light via large windows, and complemented by high ceilings, a charming fireplace, and bespoke cabinetry. The dine-in kitchen to the rear features integrated appliances, cream cabinetry, wooden worktops, and leafy views. A separate W/C and a stylish family bathroom with a walk-in shower lead off the kitchen. Both bedrooms are spacious doubles, with the second bedroom located on the first floor. Upstairs, the principal suite spans the entire top floor, complete with built-in storage and a luxurious en-suite with a bathtub, separate shower, and striking tiling.

Features

- Two double bedrooms
- Two bathrooms
- Victorian maisonette
- Private entrance
- Beautifully presented throughout
- Quiet, neighbourly street
- Local pub, shops and amenities
- Walking distance to Brixton and Clapham High Streets
- Share of Freehold
- Chain-free

Council tax band C EPC rating C (70)

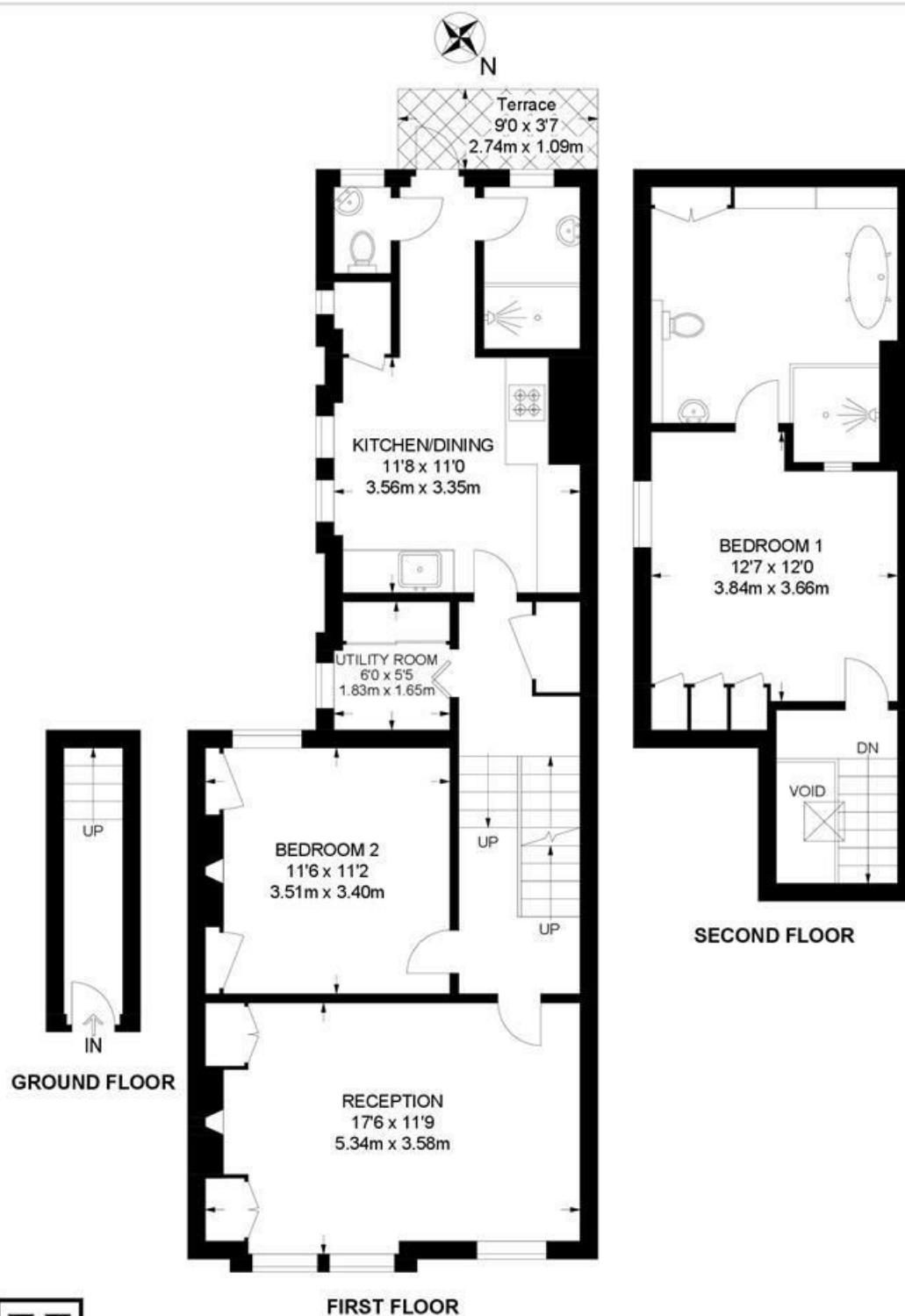




Kingswood Road, Brixton, SW2

Kingswood Road, SW2
2 Bedroom Flat

APPROXIMATE GROSS INTERNAL AREA: 1080 SQ FT / 100 SQ M



While we try our very best, floor plans are produced as a guide only and we take no responsibility for the precise accuracy with which any property is represented.

Kingswood Road, Brixton, SW2

